

## 8MP Fixed Lens Turret IR HD Analog Camera w/WDR



- 1/2.7" CMOS Image Sensor
- 8MP@15fps (TVI/AHD/CVI) Encoding
- 2.8mm Fixed Lens
- WDR
- Infrared Night Vision
- AHD, TVI, CVI and CVBS Video Signals
- Up to 30m (98') IR distance
- On Screen Display Menu
- IP66 Ingress Protection Rating
- NDAA Compliant

### Technical Specifications

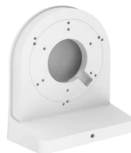
Camera	
Imaging Device	1/2.7", 8.0 Megapixel, Progressive Scan, CMOS
Effective Pixels	8MP 3840(H)x2160(V)
Max Frame Rate	AHD/TVI/CVI: 15fps, CVBS: 960H
Video Output	BNC
Min. Illumination	Color 0.06Lux @F1.6(AGC ON); B/W 0 lux @ IR ON
Lens Type/Focal Length	Fixed(M12)/ 2.8mm
Max Aperture Ratio	F1.6
Angular Field of View	Horizontal:111°, Vertical:59°, Diagonal: 134°
Min. Object Distance	1.8m
Video Trans. Distance	Max 300M (RG6 Cable)
IR Distance	30M
Remote Control	ACP (AHD Coax Protocol)
Reverse	Mirror
Gain Control	Auto
Wide Dynamic Range	WDR
Image Setting	Ext / Color / BW
White Balance	ATW
BLC	Off / Custom
Electronic Shutter Speed	Auto
Digital Noise Reduction	3D DNR

General	
Power Supply	DC12V
Power Consumption	Max 4W (IR ON)
Ingress Protection	IP66
Dimensions (mm)	3.9" x 3.5"
Working Environment	Temperature: -30°C~ +55° (-22°F ~ 131°F) Humidity: Less than 90% RH
Material	Metal
NDAA and FCC-Compliant	Yes

### Compatible Mounts



**XPM-JB1**



**XPM-WM1**



**XPM-PMJB1-ASSY**