




Smart IPC Operation Guide

Manual Version: V1.00

Symbols

The symbols in the following table may be found in this manual. Carefully follow the instructions indicated by the symbols to avoid hazardous situations and use the product properly.

Symbol	Description
 WARNING!	Contains important safety instructions and indicates situations that could cause bodily injury.
 CAUTION!	Means reader be careful and improper operations may cause damage or malfunction to product.
 NOTE!	Means useful or supplemental information about the use of product.

Contents

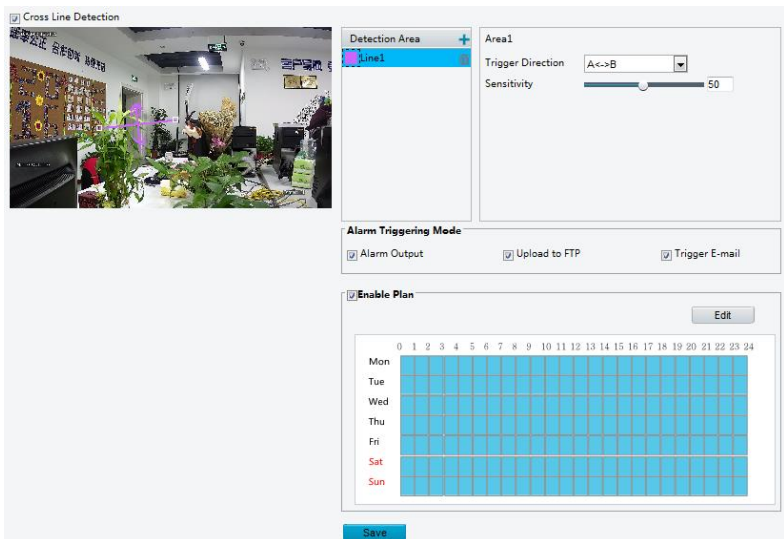
1 Smart Functions.....	1
Cross Line Detection	1
Intrusion Detection	2
Face Detection	3
People Counting	4
2 Appendix.....	5
FTP.....	5
E-mail	6
OSD	7

1 Smart Functions

Cross Line Detection

Cross line detection can be employed in live view to detect if an object has crossed a preset line and trigger alarms.

1. Click **Setup > Events > Smart Alarm**, and go to **Cross Line Detection** tab.



2. Select **Cross Line Detection** to enable the function.
 3. In **Detection Area**, click **+** to create a new trigger line. Click **🗑️** to delete the desired line.
 4. Drag the trigger line into desired position and adjust its orientation.
 5. Set trigger direction and sensitivity to determine how the alarm will be triggered.
 6. Set alarm triggered actions and arming schedule accordingly.
- Alarm triggered actions and arming plan are explained below.

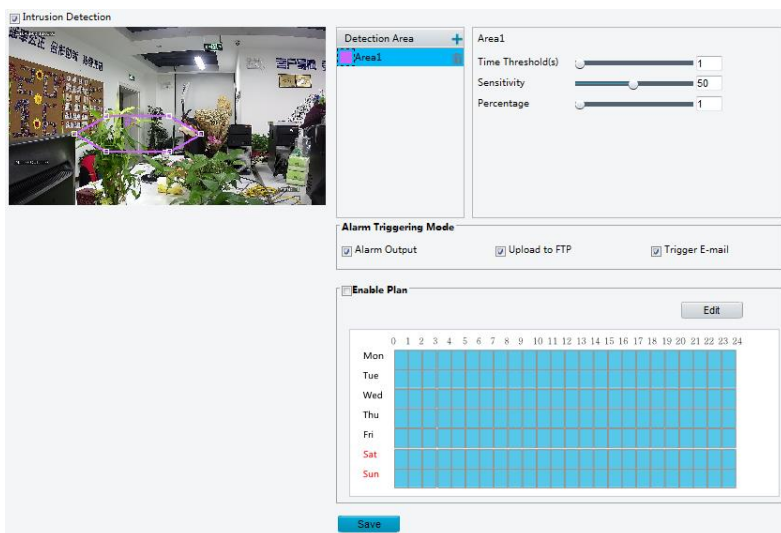
Item	Description
Alarm Output	Select to send alarm output when an alarm is triggered. Note: The device will output alarm signals to third-party devices for triggered actions.
Upload to FTP	Select to send images to FTP server when an alarm is triggered. Note: To configure FTP server settings, click Setup > Network > FTP . For details, see FTP.
Trigger E-mail	Select to send alarm information to the preset email address when an alarm is triggered. Note: To configure email settings, click Setup > Network > E-mail . For details, see E-mail.
Enable Plan	Select to enable arming schedule. Note: The plan covers 24 hours each day by default.



7. Click **Save**.

Intrusion Detection

Intrusion detection can be employed in live view to detect if an object has entered a preset area and trigger alarms.

1. Click **Setup > Events > Smart Alarm**, and go to **Intrusion Detection** tab.

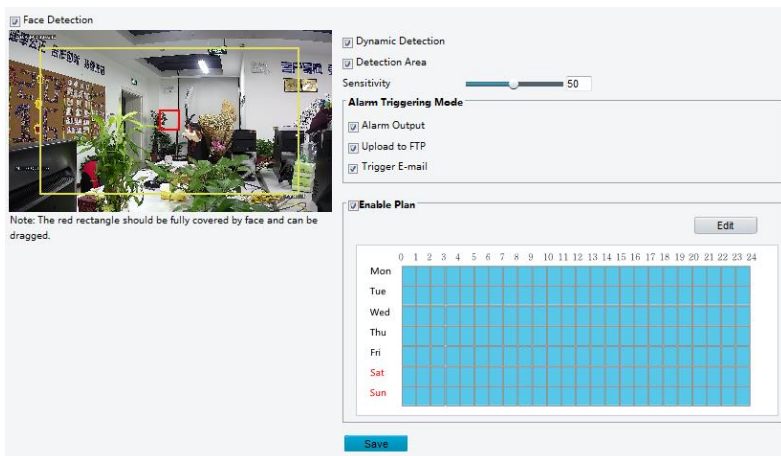


2. Select **Intrusion Detection** to enable the function.
3. In **Detection Area**, click  to create one. Click  to delete desired area.
4. Drag the detection area into desired position and adjust its orientation.
5. Set time threshold, sensitivity and percentage to determine how the alarm will be triggered.
 - **Time Threshold:** Alarm will be triggered only when the time an object stayed in the detection area exceeds the threshold.
 - **Percentage:** Alarm will be triggered only when the percentage of an object's size in the detection area exceeds the threshold.
6. Set alarm triggered actions and arming schedule accordingly. For details, see Cross Line Detection.
7. Click **Save**.

Face Detection

Face detection can be employed to detect human faces.

1. Click **Setup > Events > Smart Alarm**, and go to **Face Detection** tab.



2. Select **Face Detection** to enable the function. Select **Dynamic Detection** and **Detection Area**.
3. Drag the detection area into desired position and adjust its orientation.
4. Set alarm triggered actions and arming schedule accordingly. For details, see Cross Line Detection.
5. Click **Save**.



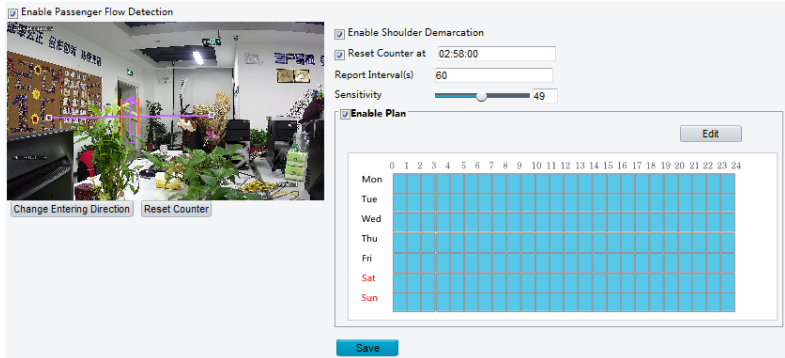
Note!

- If dynamic detection is enabled, face tracking box will be shown along with the alarm; otherwise, only the alarm is reported.
 - The faces appear in the detection area must be bigger than the red box.
-

People Counting

People counting can be employed to record the number of people passing through the preset detection area.

1. Click **Setup > Intelligent > People Counting**.



2. Select **Enable People Counting** to enable the function. Select **Enable Shoulder Demarcation** to improve detection accuracy by marking the width of shoulders.
3. Drag the trigger line into desired position and adjust its orientation.
4. Click **Change Entering Direction** to set the trigger direction.
5. Set alarm triggered actions and arming schedule accordingly. For details, see Cross Line Detection.
6. Click **Save**.
7. Add people counting statistics to OSD. For details, see OSD.

2 Appendix

FTP

With configured FTP settings, the device can upload snapshot images to the specified FTP server.

1. Click **Setup > Network > FTP**.

Server Parameters	
Server IP	<input type="text" value="203.6.1.101"/>
Port No.	<input type="text" value="5000"/>
Username	<input type="text" value="admin"/>
Password	<input type="password" value="•••••"/>
Upload Images	<input checked="" type="checkbox"/>
Overwrite Storage	<input type="checkbox"/>
Overwrite At(image)	<input type="text" value="1000"/>

2. Set basic information of the FTP server, including IP address, port number, account with upload and overwrite permissions and overwrite threshold.
3. Click **Save**.

E-mail

With configured email settings, the device can send messages to the specified email address when an alarm is triggered.

1. Click **Setup > Network > E-mail**.

Sender	
Name	<input type="text" value="IPC1"/>
Address	<input type="text" value="Room1"/>
SMTP Server	<input type="text" value="smtp.163.com"/>
SMTP Port	<input type="text" value="465"/>
SSL	<input checked="" type="checkbox"/> Enable
Capture Interval(s)	<input type="text" value="2"/> <input type="button" value="v"/> <input checked="" type="checkbox"/> Attach Image
Server Authentication	<input checked="" type="checkbox"/> Enable
Username	<input type="text" value="user1@163.com"/>
Password	<input type="password" value="●●●"/>
Recipient	
Name1	<input type="text" value="user2"/>
Address1	<input type="text" value="user2@163.com"/>
Name2	<input type="text"/>
Address2	<input type="text"/>
Name3	<input type="text"/>
Address3	<input type="text"/>

2. Set sender and recipient information.

Important parameters are explained below.

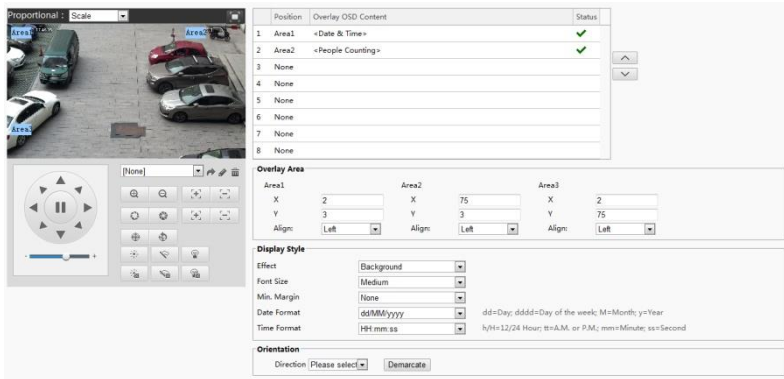
Item	Description
SSL	When enabled, the emails will be sent through SSL encryption.
Attach Image	When enabled, the e-mail will contain 3 instant snapshots as attachment according to the capture interval.

3. Click **Save**.

OSD

OSD, namely On Screen Display, is the text displayed on the screen with video images and may include time and other customized contents.

1. Click Setup > Image > OSD.



2. Set OSD position and content as needed.

- **Position:** Click the desired position box in the **Live View** area and drag the box to the desired position. To set the position precisely, use the X and Y coordinates under **Overlay Area**.
- **Overlay OSD Content:** The drop-down list includes options of **Date**, **Time**, **Preset** and other information. You may also select **Custom** and enter the content as needed.

After you have set the position and OSD content, the ✓ symbol appears in the **Status** column, which means that the OSD is set successfully. You may set multiple lines of contents for each area and use ^ and v to adjust the sequence of display.

3. After you have completed the settings, a message appears to indicate it is set successfully.

To cancel an OSD, clear the OSD content under **Overlay OSD Content** or select **None** under **Position**.