

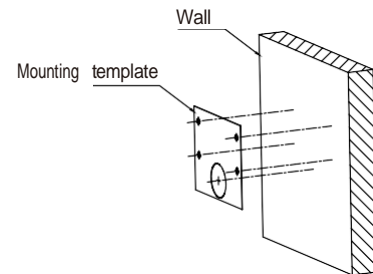
Quick Start Guide

HD Network Camera

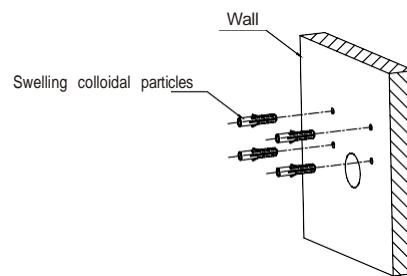
PTZ Camera

1 Installation

Wall Mount

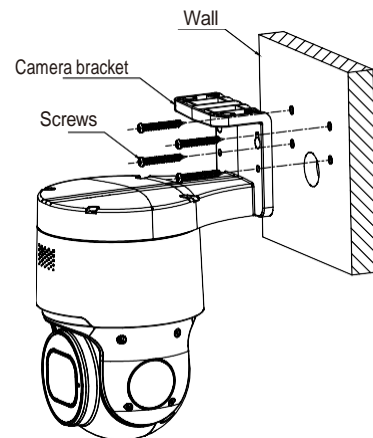


Step 1: Stick the mounting template to the wall, drill 4 screw holes and 1 tail cable hole.



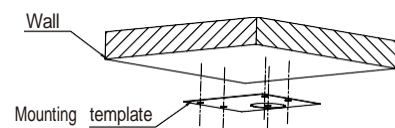
Step 2: Hammer the 4 swelling colloidal particles into the drilled wall holes.

01



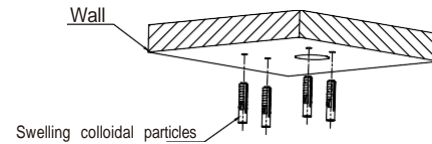
Step 3: Align the camera bracket with the 4 swelling colloidal particles screw holes, and lock the screws to fix it

Ceiling Mount

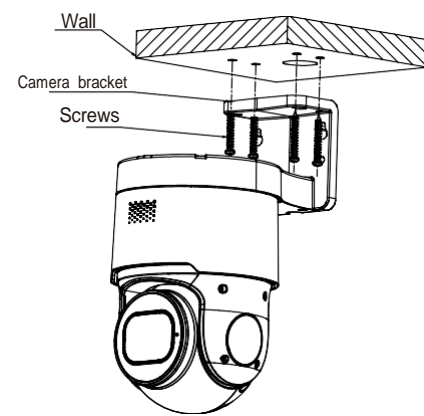


Step 1: Stick the mounting template to the wall, drill 4 screw holes and 1 tail cable hole.

02



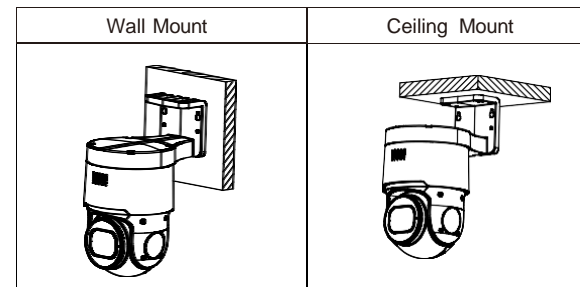
Step 2: Hammer the 4 swelling colloidal particles into the drilled wall holes.



Step 3: Align the camera bracket with the 4 swelling colloidal particles screw holes, and lock the screws to fix it.

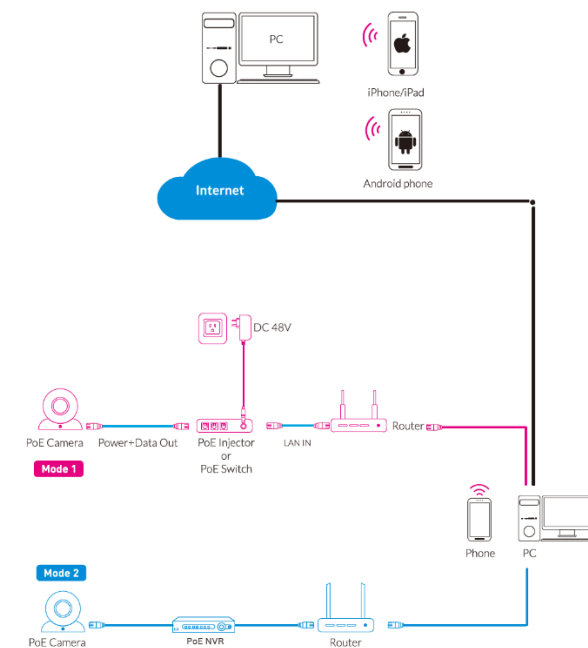
03

Installation method



04

2 Camera Connection Diagram



Attention: There are two connection modes:
1. For non-PoE router, pls connect the camera by a PoE switch or a PoE injector.
2. For a POE NVR, pls connect the camera directly to the POE NVR, then follow the below steps.

05

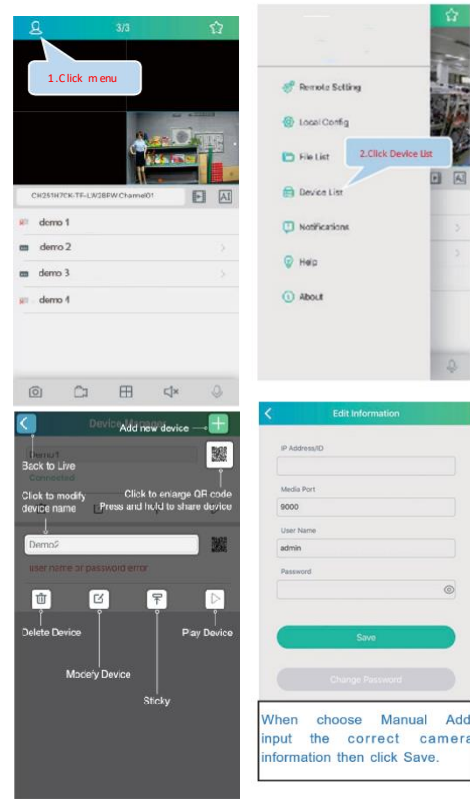
3 Install the APP

Scan the QR code below to download the mobile App

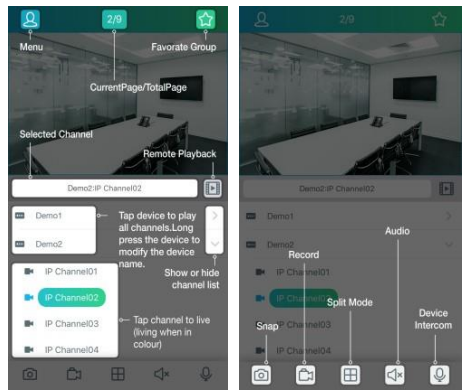


4 Camera Settings

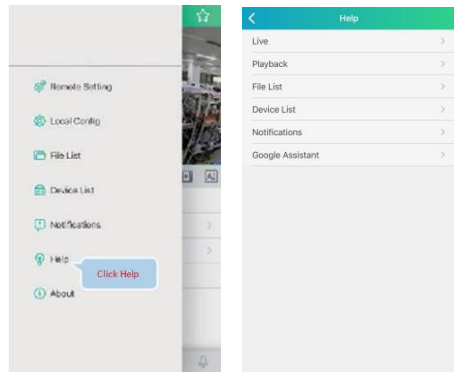
Open the app, you will see the following interface to add the cameras.



If add the device successfully, you will see the following interface.



※ Please refer to "Help" section for more detailed instruction.



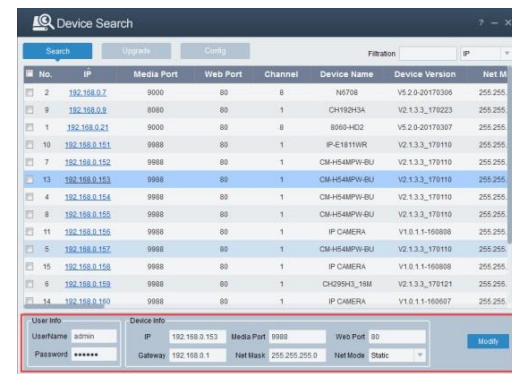
5 In Windows

1. Download the "Device Config Tool", it will help to search all the available devices on your local network.

Windows: <https://www.dropbox.com/s/4jv0mxr4hjo4qfw/Tool-Win.zip?dl=0>

Mac: <https://www.dropbox.com/s/evid0e4hez0bmfj/Tool-Mac.dmg.zip?dl=0>

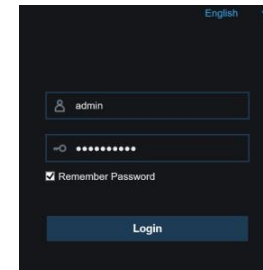
2. Under "Device Config Tool", you can modify the information of a selected device. Including IP, Media Port, Web Port, Gateway, Net Mask, Net Mode. (The default username & password is: admin & admin)



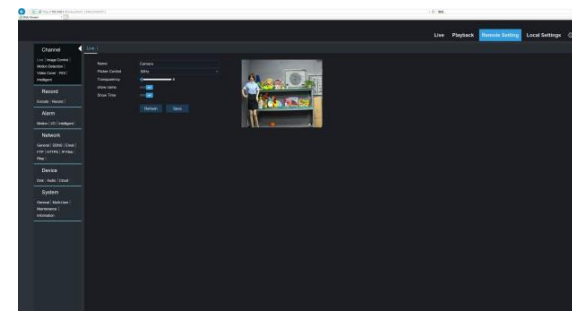
6 In MAC OS

3. Open the Internet Explorer and input the device's IP address;

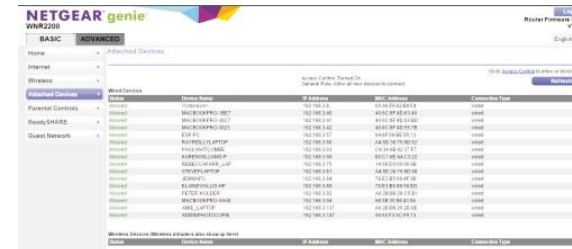
Input the username & password in the following interface to login the device.



4. After login, click "Remote Setting" to change the setting.



1. Open your router web interface and login.
2. Find the "Attached device" or "Connected device" menu. Find the device's IP address according to it's MAC address. The Mac address is labeled on the device.



Picture for reference only

3. Input the device's IP address in Safari, login with your username & password.
4. After login, click "Remote Setting" to modify the setting.